

INSTRUCTIONS FOR ASSEMBLY OF 1026 SERIES FOLDING UNIT TRAYS

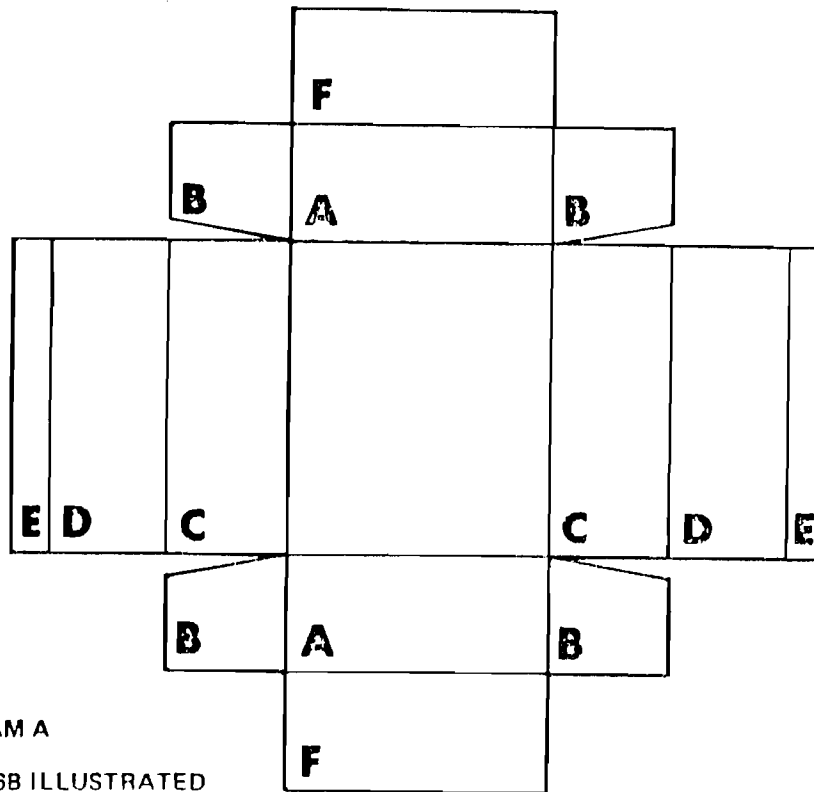


DIAGRAM A
NO. 1026B ILLUSTRATED

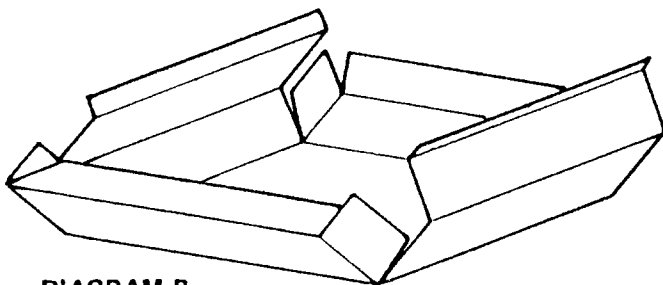


DIAGRAM B
PARTLY ASSEMBLED

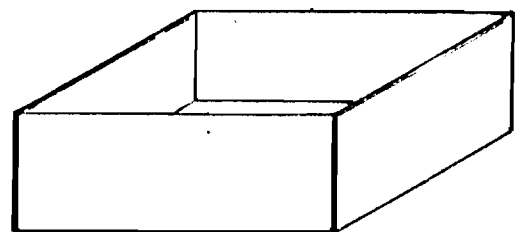


DIAGRAM C
FULLY ASSEMBLED

1. Pre-fold all score lines before assembly. This action will result in a much more rigid, tighter end product, both dimensionally and structurally. Place the unfolded tray, white surface down, on a flat, clean table. All scores are to be folded UP with the exception of panel 'E' which is to be folded down.
2. Fold up panels A.
3. Fold in panels B.
4. Fold up panels C.
5. Fold over panels D & E.
6. Fold down panels F.
7. Apply glue liberally to the bottom of the box and press in polyethelene pinning bottom. Take care not to trap air under the foam, as a bubble may result.
8. It is suggested that glue be applied to all concealed chip-board surfaces.